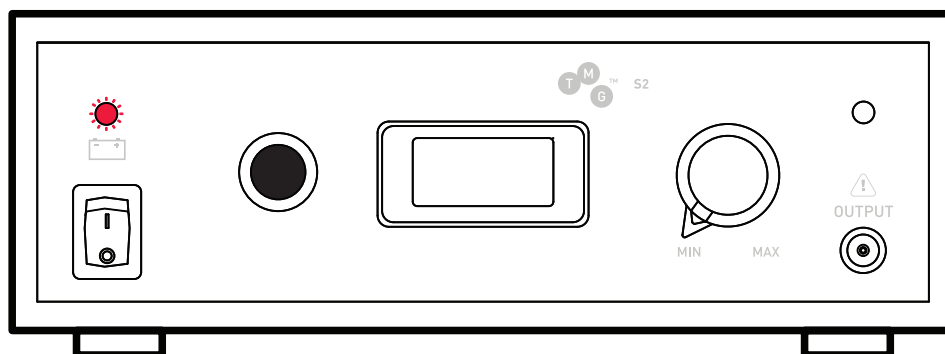
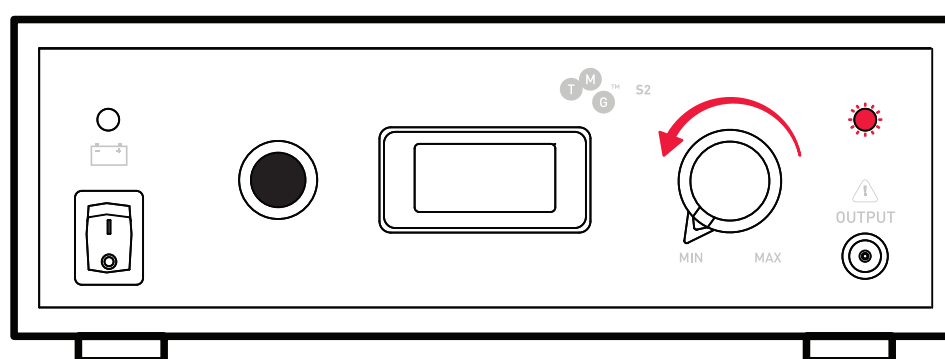


THE RED LIGHT ON THE TOP LEFT CORNER



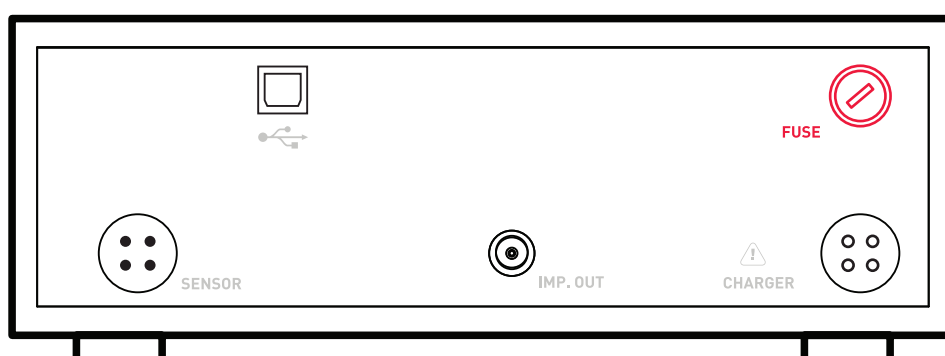
Battery is empty. Please recharge the battery.
Make sure that the stimulator is switched off before charging, otherwise it will not be charge.

THE RED LIGHT ON THE TOP RIGHT CORNER



Set control button on MIN (0).

NO RESPONSE FROM THE STIMULATOR



Check fuse on the back panel.

»TIME OUT ERROR«

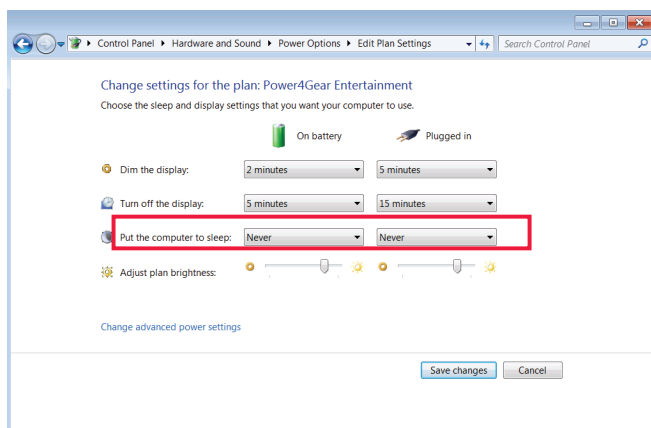


Fig. 1

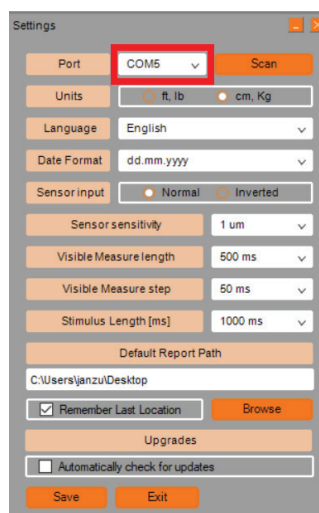
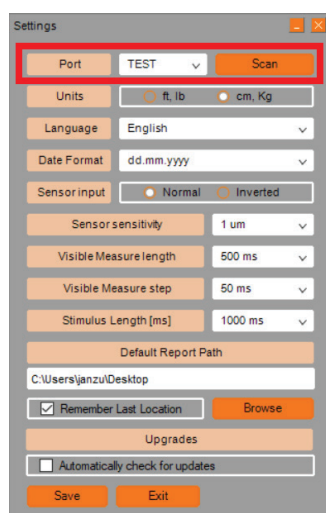


Fig. 2

In case the message »Time out error« appears, change »Put the computer to sleep« to »Never« under Edit Plan Settings (Control Panel / Hardware and Sound / Power Options / Edit Plan Settings) - Fig. 1.

Furthermore change »When I close the lid« to »Do nothing« both in battery and plugged - in mode, under Edit Plan Settings (Control Panel / Hardware and Sound / Power Options / System Settings) - Fig. 2

»NO RESPONSE FROM DEVICE«



In case the message »No Response From Device« appears, make sure the stimulator is connected and turned on. Check if the COM port is set in the settings menu. If the port reads test, press scan to set actual port.